

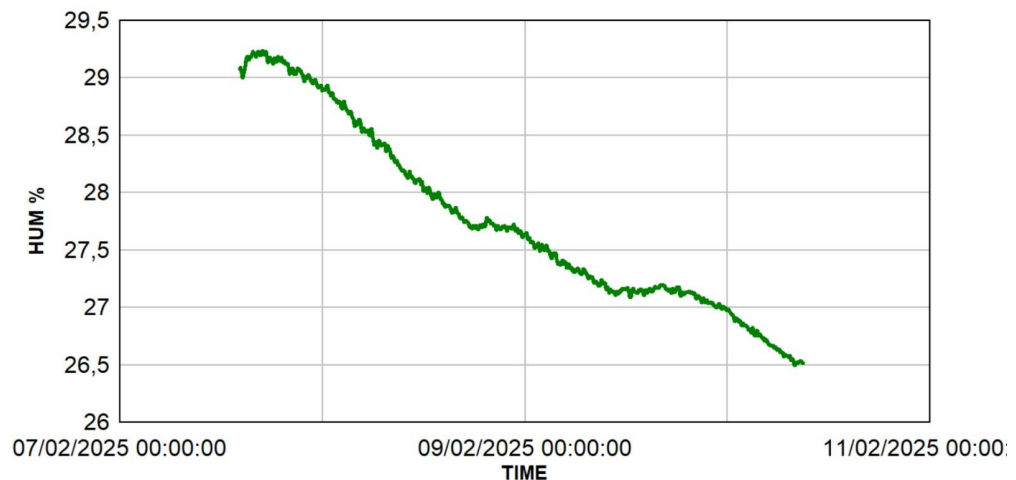
This system is the result of two years of development to detect moisture in wooden buildings. The system is formed by a textile tape that is placed in contact with wood, and a control box. The level of moisture is continuously monitored, and in case of values higher than 20% the alarm is triggered. Different alarm levels can be set. The sensitive element is made with durable materials, such as stainless steel and polyester thread.

The tape has been developed to be used between CLT walls and concrete slabs, but it can also be used near windows, or embedded in concrete.

The tape contains two separate circuits, one for the detection of moisture and a second one that is used to verify the integrity of the tape or to measure temperature.

This tape is patented in EU and in the US.

- Extremely thin
- Flexible
- Detection of water and moisture
- Specifically designed to be placed under CLT walls
- Resistant to mechanical pressure up to 21 MPa
- Second circuit for continuity and/or temperature monitoring
- Measures in independent sections of 30 cm each
- Wi-Fi or Ethernet connection



Surface moisture of a wet CLT block exposed to air

### TECHNICAL CHARACTERISTICS

High sensitivity textile tape

Easy to install

Settable alarms

Extremely simple working principle

Access from any device

Combined moisture/temperature sensor



Technical data and features are subject to change without notice